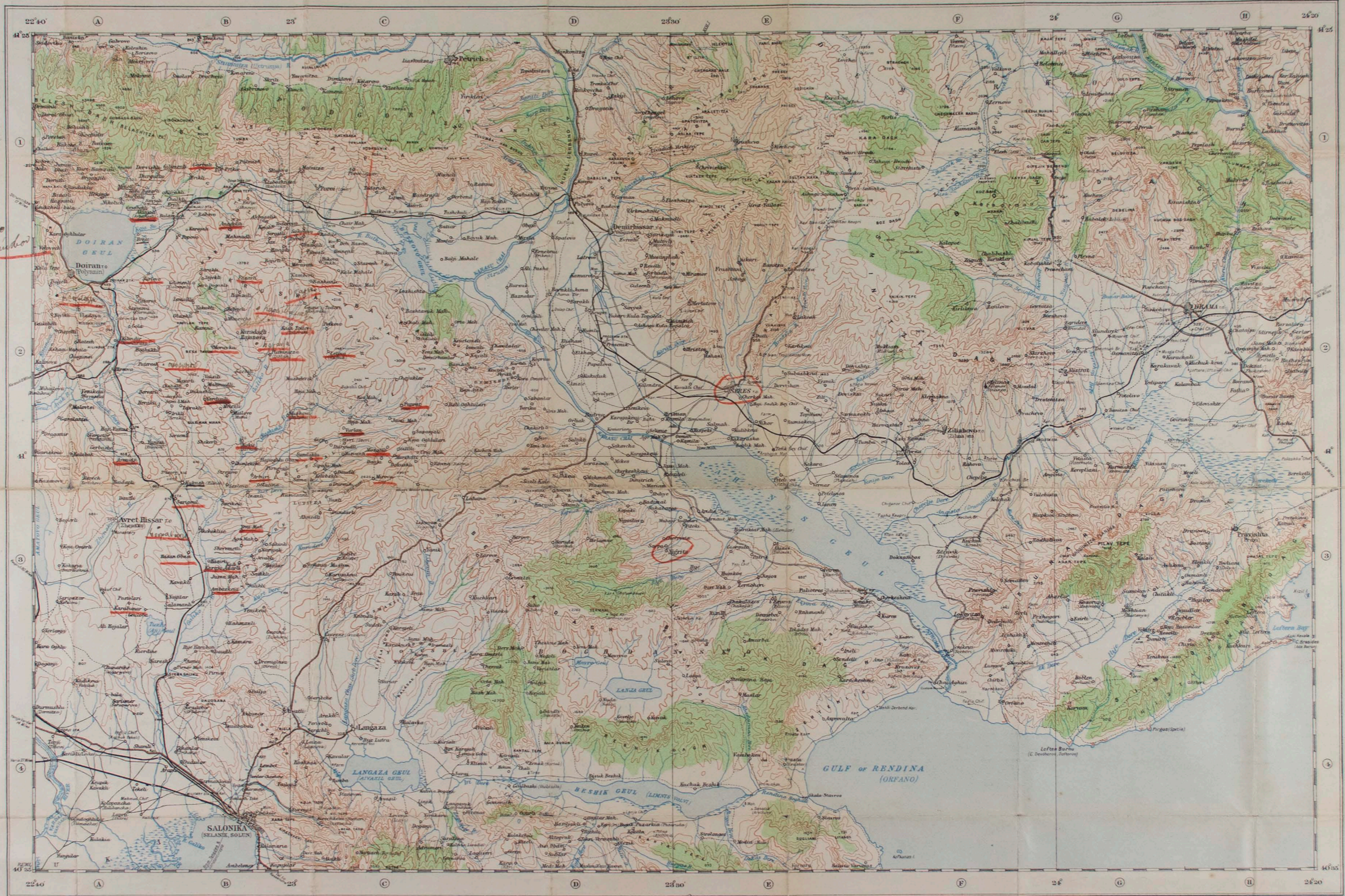


# TURKEY

## SALONIKA

TURKEY 1:250,000



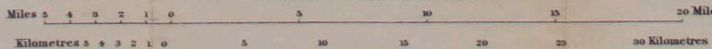
Geographical Section, General Staff, N° 2097

REFERENCE

Main road	—	Bar	Spur
Secondary road	—	Byuk	Great
Connecting road	—	Burnu, Burun	Cape
Pathway	—	Cha	Stream
International frontier	—	Chay	Meadow
Railway	—	Chirak (Ch. Ch.)	Mountain
Telegraph	—	Dag (D.)	Pass
Heights in feet above sea level	—	Derband	Valley with stream
Church, Monastery	—	Dera (D.)	Dal
Mosque	—	Dol	Valley
Ruins	—	Dolli (D.)	Lower
Isa	—	Esk	Old
Ana (or Bale)	—	Fane	Light house
Ashag (or Zr)	—	Gul	Lake

Chief town of Vilayet (Province) — **ADRIANOPLÉ**  
 Gorniy (District) — **GAZALLA**  
 Byuk Chekmeje  
 Naha (Sub-District) — **Silvris**  
 Nahie (Sub-Division) — **Silvris**  
 Village — **Maltepe**

Scale, 250,000 or 1 inch to 3.95 Miles



Approximate contours at 250 feet vertical interval  
 Above 2000 feet at 500 feet vertical interval.

REFERENCE

Golma (Gm.)	Great	Moss	Bridge
Gorniy (Gm.)	Upper	Nova (Nv.)	New
Han	Rest-house	Oba	Summer village
Izvor	Spring	Orman	Wood
Kale	Fort	Orta	Middle
Karakol (Kar.)	Police or military post	Ova	Plain
Kita	Lower	Planina	Mountain range
Kaya	Cliff rocks	Sirt	A Summit
Keupri	Bridge	Su	River
Kuchuk	Small	Taba	Shrine
Kula	Tower or blackhouse	Tapa	Hill
Lama (L.)	Bay or harbour	Vrhunac or Vrhan (Vrh.)	A Summit
Mali (M.)	Small	Vrta	Summer pasture
Mandra	Sheepfold	Vukari	Ground upper
Mere	Common land in forest		

War Office, Oct. 1908.

INDEX TO SHEETS

USKAR	USKARANA	USKARALI
MONASTIR	SALONIKA	USKARANA
KODANA		

A. 21.308